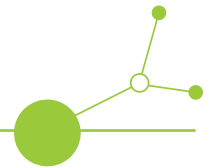


D.1.2.1 Online GreenScape CE Visual Mapping Platform(GVMP)



Version Final
02 2024

GVMP accessibility tool: guidelines for use





Project information	
Project ID	CE0100042
Project Acronym	GreenScape CE
Project title	Climate-proof landscape through renaturing urban areas in Central Europe
Lead partner	North-West Croatia Regional Energy and Climate Agency
Document	
Deliverable	D.1.2.1 - Online GreenScape CE Visual Mapping Platform (GVMP)
Work package / Activity	WP 1 / Activity 1.2 Visual mapping of potential GI and NBS
Deliverable responsible	PP 4 - Urban Urban Planning Institute of the Republic of Slovenia

Contact person for the project GreenScape CE

North-West Croatia Regional Energy and Climate Agency
Project Manager
Tijana Šimek
Email: tsimek@regea.org
Phone: +385913885308

Contact person for the Platform

Urban planning Institute of the Republic of Slovenia
Franc J. Zakrajsek
Email: gvisualmapping@gmail.com
Phone: +38641674447



GVMP accessibility tool: guidelines for use

GVMP tool Accessibility calculates the accessibility of the population to (selected) green spaces.

The accessibility of green spaces to the population is an important aspect of urban planning. The GVMP accessibility tool is an excellent resource for the identification of accessibility issues, facilitation of discussions with stakeholders and the exploration of alternative solutions. The tool provides detailed information on the number and age structure of inhabitants in a particular catchment area. This allows cities to plan green spaces to meet the needs of different age groups of potential users.

The GVMP Accessibility tool provides information on the state of the GI for pilot sites (Fig. 3) and the ability to calculate accessibility (Fig. 4).

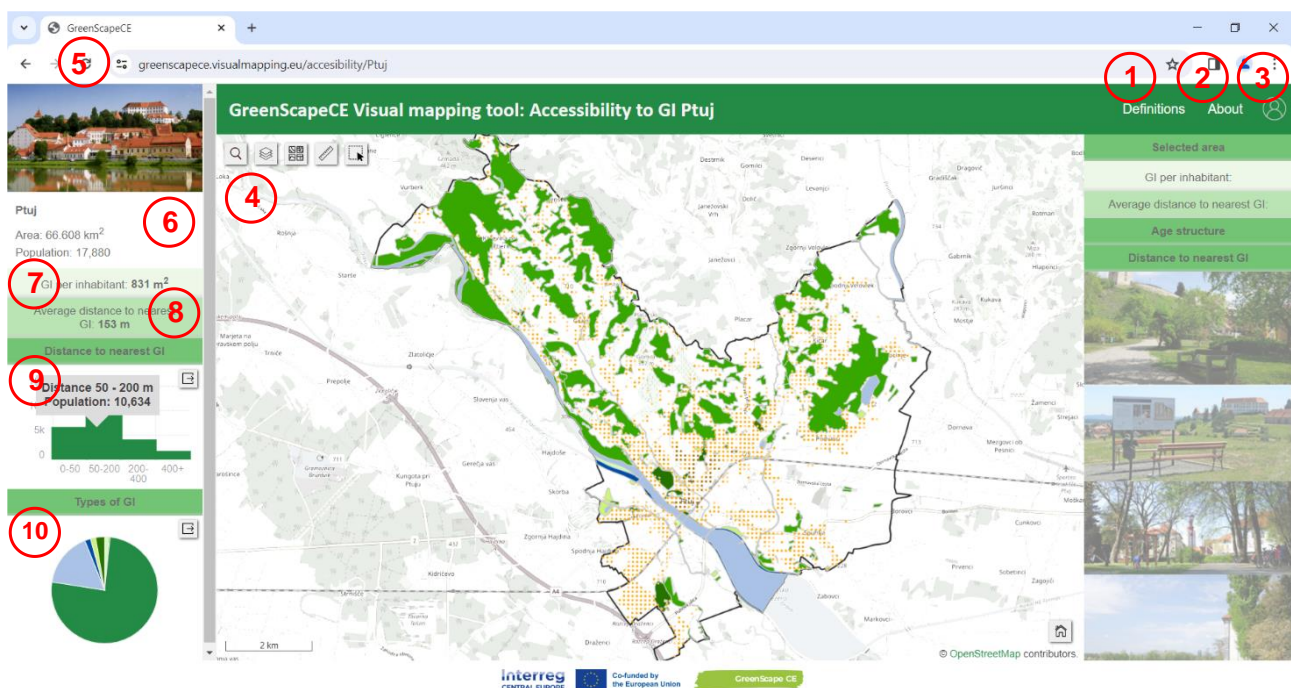


Fig. 3: GVMP Accessibility tool: general screenshot

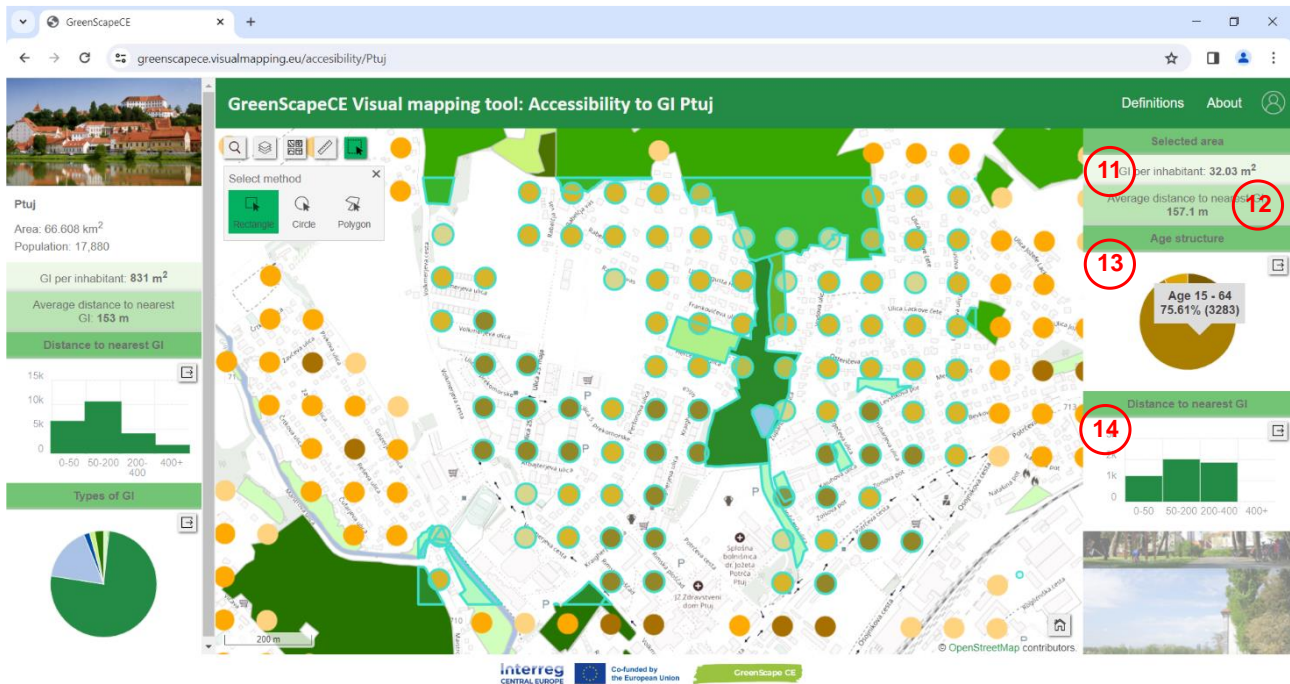



Fig. 4: GVMP Accessibility tool: selected population dots screenshot

GVMP Accessibility tool functionalities (fig. 3)	
1	descriptions of GVMP, instruction to use
2	about the GVMP, authors, contributors
3	user information, login form, registration form
4	map area with GIS tools
	search places
	display layers / legend, user can switch visibility of the layer or use slider and change the transparency of the layer The names of the layers are abbreviated by the name of the pilot city and the layer type, where the first letter is the city and the second is the layer type (e.g. P_P is the population of the city of Ptuj). M - Milan, P - Ptuj, S - Szeged, W - Warsaw, Z - Zagreb, X - all cities P - Population, GI - Green areas from land use, B - Boundary
	select basemap
	measure distance or area on a map



		select an area on a map: rectangle, circle or polygon - calculate accessibility of population to green spaces
5		Refresh the GVMP to up-to-date version
Pilot city (fig. 3)		
6		pilot city name, image, area m2 and population number
7		GI per inhabitant in the pilot city
8		average distance to the nearest GI in the pilot city
9		distance to the nearest GI, graph showing the number of inhabitants in the pilot city within the distances to the GI 0-50, 50-200, 200-400, 400+
10		graph showing the percentage of GI types in the pilot city
Selected area in the pilot city (fig. 4)		
11		GI per inhabitant in the selected area
12		average distance to the nearest GI in the selected area
13		graph showing the age structure of the population in the selected area
14		graph showing the percentage of types of GI in the selected area